

Mutual Fund Shopping

How to Evaluate and Shop Mutual Funds

Timothy.Shirk@FrancisWay.com



Understanding Mutual Funds

Understanding Mutual Funds

Stocks vs Bonds

Asset Style

Mutual Funds vs ETFs

Active vs Passive



Understanding Mutual Funds

Stocks vs Bonds

Asset Style

Mutual Funds vs ETFs

Active vs Passive



Stocks vs Bonds

Stocks



- Ownership of companies
- Higher growth potential
- More risk

Bonds



- Lending to companies
- Lower growth potential
- Less risk



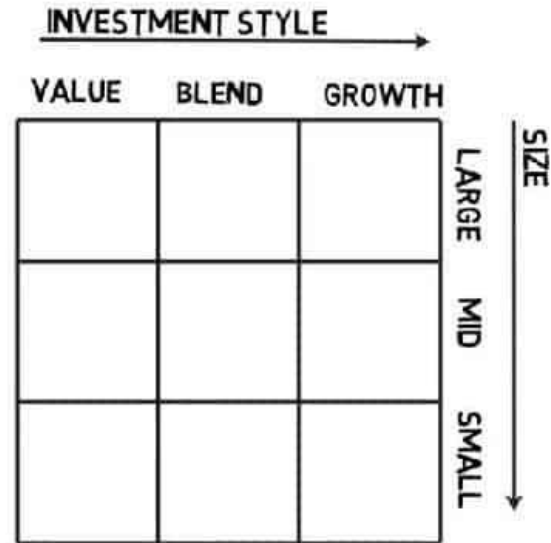
Understanding Mutual Funds

Stocks vs Bonds

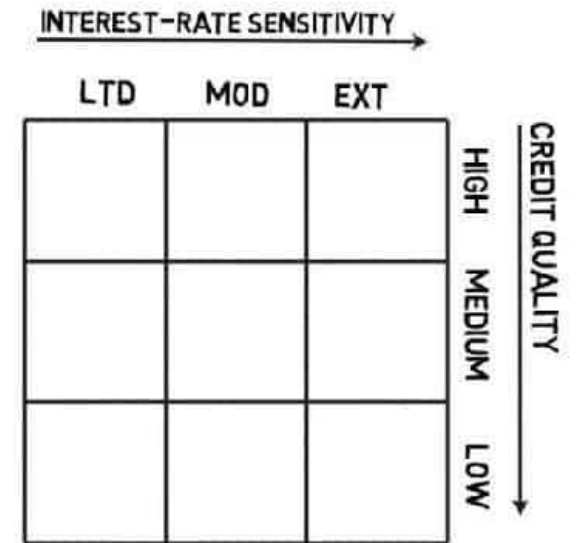
Asset Style

Mutual Funds vs ETFs

Active vs Passive



EQUITY



BONDS/FIXED-INCOME

Stock Types

Stocks vary by . . .

- Size of company
- Style of company
- Location of company

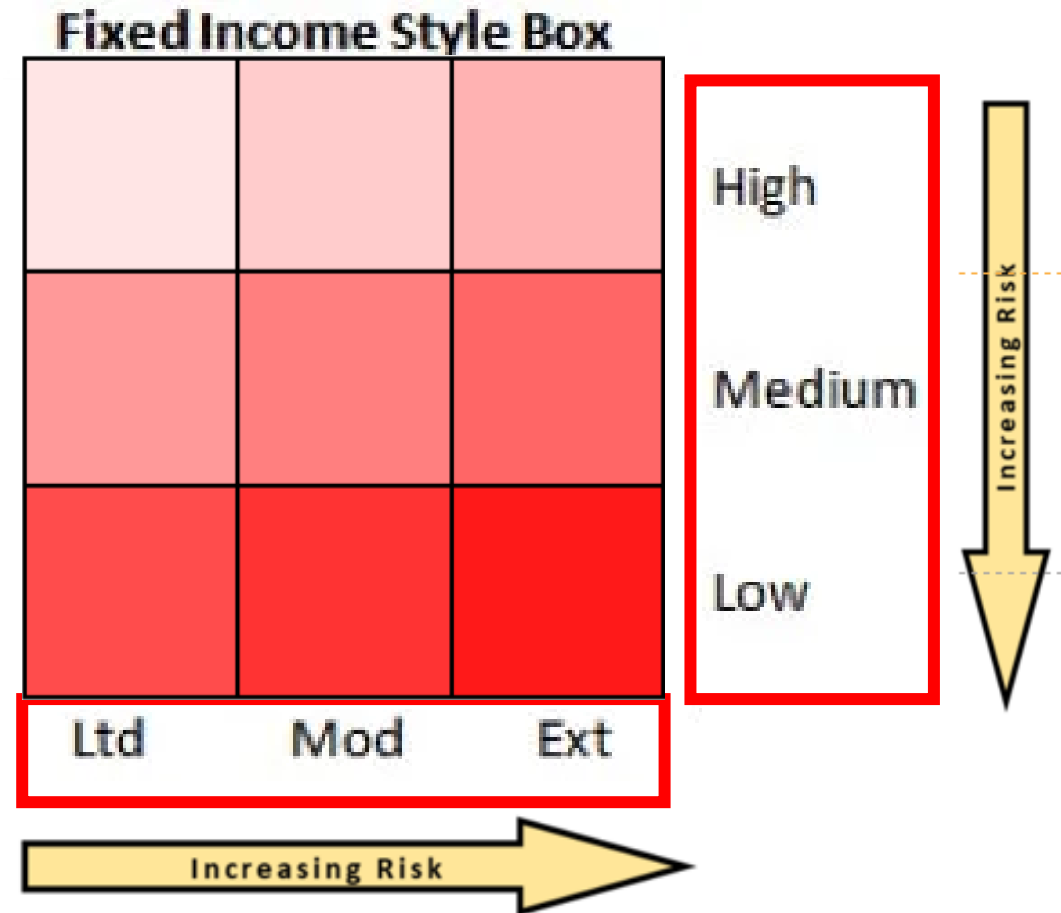
		Investment Style		
		Value	Blend	Growth
Market Capitalization	Large			
	Mid			
	Small			



Bond Types

Bonds vary by . . .

- Credit Quality
- Interest Rate Sensitivity
- Location of company



Understanding Mutual Funds

Stocks vs Bonds

Asset Style

Mutual Funds vs ETFs

Active vs Passive



Mutual Funds

- Multiple investors pool their money
- A mutual fund manager is selected to invest the pooled funds
- Investors become owners of a “share” of the resulting portfolio



Mutual Fund

Mutual Fund vs ETF

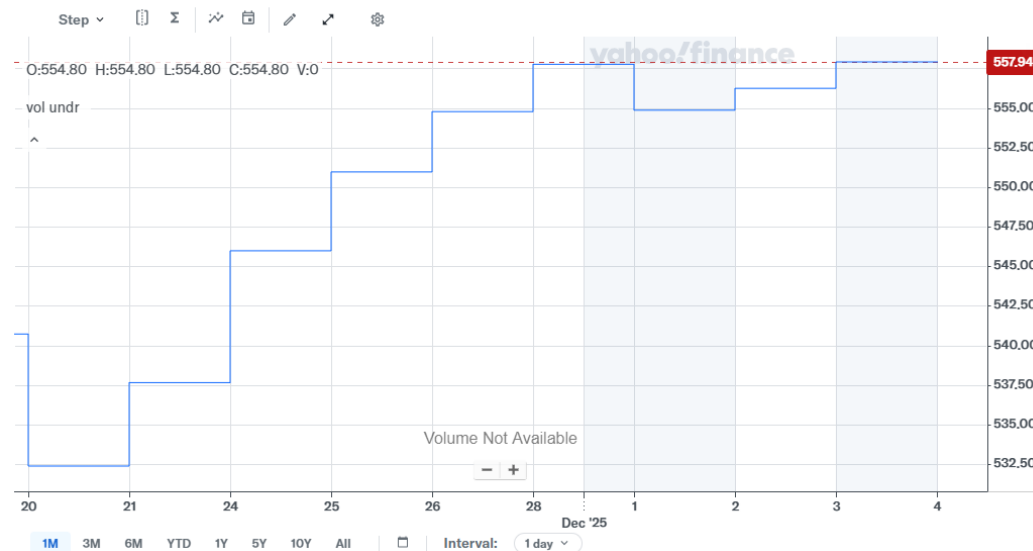
Mutual Fund

- Pooled portfolio
- Traded after market close

Vanguard Institutional Index Instl PI (VIIIX) [☆ Follow](#)

557.94 +1.67 +0.30%

As of 8:10:25 AM EST. Market Open.



ETF

- Pooled portfolio
- Trade throughout the day

Vanguard S&P 500 ETF (VOO) [☆ Follow](#)

628.51 -0.26 (-0.04%)

As of 2:40:09 PM EST. Market Open.



Understanding Mutual Funds

Stocks vs Bonds

Asset Style

Mutual Funds vs ETFs

Active vs Passive



What is an Index?



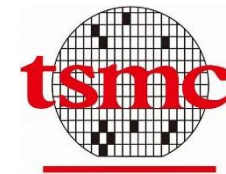
S&P 500



Russel 2000



MSCI Ex USA



Active vs Passive (Index) Investing



Large-Cap Active Portfolio



Large-Cap Index Portfolio



Active vs Passive (Index)



Active



- Goal – Beat the market!
- Potential for higher return
- May do better in inefficient markets and during downturns

Passive



- Goal – Be the Market!
- Lower cost
- May do better in efficient markets and during upswings



Evaluating Mutual Funds

Choose Your Investment Goal



Identify Your Investment

www.Morningstar.com

The screenshot shows the Morningstar.com website interface. A red box highlights the browser's address bar containing 'morningstar.com' and a search bar containing 'AGTHX'. Below the search bar, a dropdown menu displays the search results for 'AGTHX', with the top result being 'American Funds Growth Fund of Amer A' (AGTHX) at a price of 66.15, up 0.89. The website header includes the Morningstar logo, navigation links for Funds, ETFs, Stocks, Bonds, Markets, and Portfolio, and buttons for 'Get 14 Days Free', 'Sign Up', and 'Sign In'. The main content area features a 'U.S. Barometer Closed' table, a 'News' section, and a 'Recommended' section with various market-related topics.

U.S. Barometer Closed

	Val	Core	Gwth
U.S. Market	1.04	0.30	-0.95
U.S. Mid Cap	1.40	0.71	-0.97
U.S. Small Cap	1.68	0.28	-0.99

News

- Unemployment Expected to Tick Down — Data Week Ahead | Dow Jones
- STOXX Europe 50 Index Ends the Week 0.73% Higher at 3693.96 — Data Talk | Dow Jones
- CAC 40 Index Ends the Week 1.01% Lower at 6553.68 — Data Talk | Dow Jones

Recommended

- Ukraine-Russia Conflict
- Inflation
- Rate Hikes
- IRA Mistakes
- 8 Stocks to Own
- Tips on TIPS

Chinese Stocks: What Went Wrong

Markets Review/Preview: All Eyes on the Jobs Report

More strong readings on the labor market are expected as the Fed is seen moving higher

[Open an Online Savings Account](#)

Identify The Category

What is it invested in?

American Fun

Portfolio | Medalist Rating as of –

Quote Chart Fund Ana

Portfolio

Asset Allocation

Asset Class

U.S. Equity

Non-U.S. Equity

Fixed Income

Other

Cash

Not Classified

Holdings	% Portfolio Weight	First Bought	Market Value as of Sep 30, 2025	Cur	Share Change %	1-Year Return
NVIDIA Corp	5.81	Sep 30, 2021	19,644,297,890	USD	↓ 1.00	28.07
Microsoft Corp	4.97	Sep 30, 1998	16,779,367,836	USD	0.00	11.58
Meta Platforms Inc Class A	4.90	Mar 31, 2013	16,558,468,300	USD	↓ 10.70	4.57
Broadcom Inc	4.55	Dec 31, 2010	15,385,380,892	USD	↓ 3.09	127.76
Amazon.com Inc	3.43	Dec 31, 2008	11,595,455,032	USD	↑ 3.77	8.87
Tesla Inc	2.91	Sep 30, 2018	9,819,587,483	USD	↑ 1.56	27.12
Eli Lilly and Co	2.82	Dec 31, 2018	9,544,943,065	USD	↑ 12.30	27.82
Netflix Inc	2.45	Jun 30, 2014	8,290,521,010	USD	↓ 5.57	15.23
Alphabet Inc Class A	2.40	Mar 31, 2005	8,115,225,218	USD	↑ 16.26	87.03
Alphabet Inc Class C	2.35	Jun 30, 2014	7,924,656,447	USD	↓ 7.80	85.78

Identify The Rating

How does it compare to its competitors?

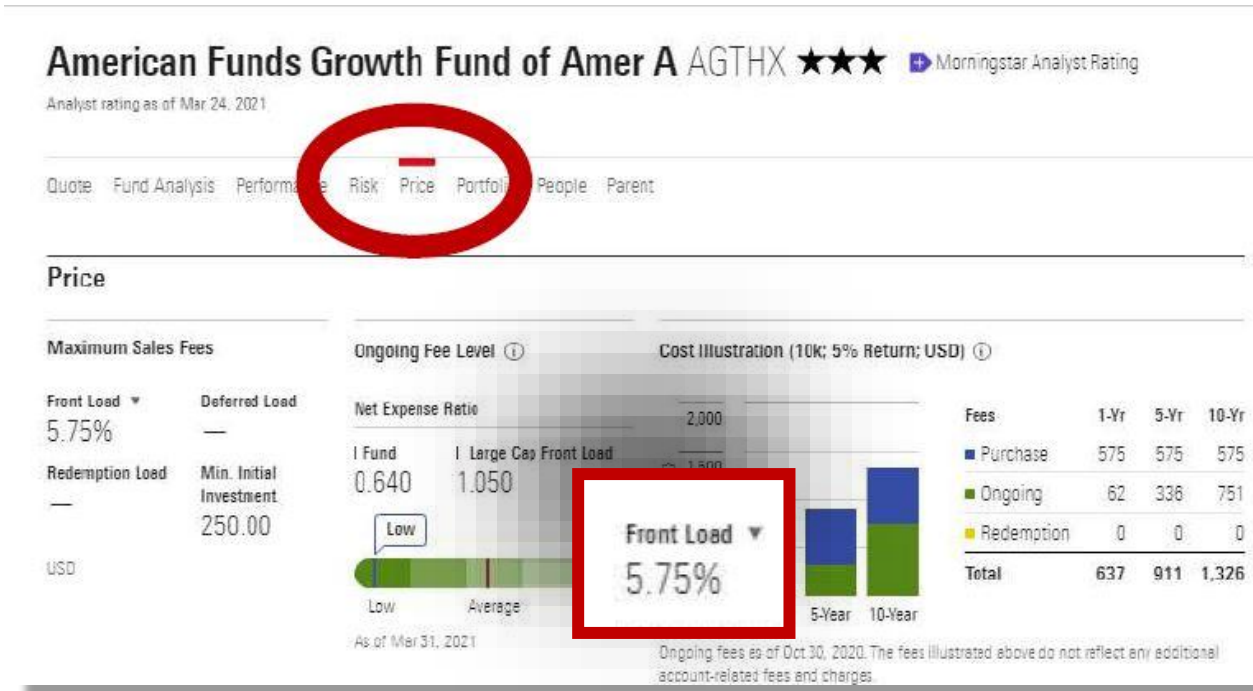


- 1 to 5 star rating
- Based on performance
 - Three, Five, and Ten year performance
 - Adjusted for risk and accounting for sales charges
 - Against similar funds
- 1 Star = bottom 10%
- 5 Stars = top 10%
- Color Rating is Subjective

Fund Name	Category	Rating	Expense Ratio	Load fee	Rank in Category			
					1 yr	3 yrs	5 yrs	10 yrs
<i>Growth Fund of America (AGTHX)</i>	<i>Large (Cap) Growth</i>	<i>3*</i>						

Identify The Load Fee

What is the cost of each purchase?



- Represents the percentage taken from each purchase
- Use no-load funds to avoid these fees.

Fund Name	Category	Rating	Expense Ratio	Load fee	Rank in Category			
					1 yr	3 yrs	5 yrs	10 yrs
<i>Growth Fund of America (AGTHX)</i>	<i>Large Growth</i>	<i>3*</i>	<i>0.60%</i>	<i>5.75</i>				

Identify The Rank

How does the performance compare to its peers?

American Funds Growth Fund of Amer A AGTHX ★★★ Morningstar Analyst Rating

Analyst rating as of Mar 21

Trailing Returns

Day End as of 12/03/2025

	1-Day	1-Week	1-Month	3-Month	YTD	1-Year	3-Year	5-Year	10-Year	15-Year
Investment	0.61	0.92	-0.77	5.11	20.16	17.20	25.49	12.79	15.10	14.25
Category	0.18	0.69	-2.16	5.34	16.63	13.86	24.57	12.14	15.25	14.35
Index	-0.11	0.34	-3.23	4.44	16.59	14.73	26.17	14.15	16.39	15.70
Quartile Rank										
Percentile Rank	14	26	17	57	21	27	51	47	56	56
# of Invest. in Cat.	1,098	1,098	1,096	1,092	1,074	1,066	995	930	746	570

- Compare the fund performance to other funds in the same category over time.
- Rank of 1 is highest
- Rank of 100 is lowest

Fund Name	Category	Rating	Expense Ratio	Load fee	Rank in Category			
					1 yr	3 yrs	5 yrs	10 yrs
Growth Fund of America (AGTHX)	Large (Cap) Growth	3*	0.60%	5.75	27	51	47	56

Identify The Best Options

- Compare like funds and determine the best for each category.

Fund Name	Category	Rating	Expense Ratio	Load fee	Rank in Category			
					1 yr.	3 yrs	5 yrs	10 yrs
Growth Fund of America (AGTHX)	Large Growth	3 ★	0.67	5.75	65	71	74	17
Fidelity Diversified International (FDIVX)	Foreign Large Blend	2 ★	1.30	5.75	25	67	78	24
Dodge & Cox Stock (DODCX)	Large Value	3 ★	0.52	N.	32	68	78	17

Fund Name	Category	Rating	Expense Ratio	Load fee	Rank in Category			
					1 yr	3 yrs	5 yrs	10 yrs
<i>Growth Fund of America (AGTHX)</i>	<i>Large (Cap) Growth</i>	<i>3*</i>	<i>0.60%</i>	<i>5.75</i>	<i>27</i>	<i>51</i>	<i>47</i>	<i>56</i>

Water Cure Small Cap Value (WTSVX)	Small Cap Value	3 ★	1.30	N.	49	64	56	-
Fidelity Commodity Real Return (FCRDZ)	Commodity Broad Basket	1 ★	0.74	N.	12	1	4	-
Oppenheimer Developing Markets Fund (ODVFX)	Diversified Emerging Markets	1 ★	1.04	N.	35	3	1	3

<i>Vanguard Primecap Admiral (VPMAX)</i>	<i>Large Growth</i>	<i>4*</i>	<i>0.31</i>	<i>None</i>	<i>9</i>	<i>34</i>	<i>48</i>	<i>1</i>
--	---------------------	-----------	-------------	-------------	----------	-----------	-----------	----------

Vanguard Primecap Admiral (VPMAX)	Large Growth	4 ★	0.36	N.	68	52	28	6
Vanguard Wellington (VWENX)	Mid-Cap All-Stars	5 ★	0.22	N.	55	21	11	3

Want the “Easy Button”?

Vanguard Target Retirement 2040 Fund VFORX ★★★★★ Silver

Medalist Rating as of 11/30/2025. See Morningstar.com for more details.

Quote Chart Fund Analysis Performance Sustainability Risk Price Portfolio People Parent

NAV / 1-Day Return: 50.99 / +0.33%
 Total Assets: 108.1B
Adj. Expense Ratio: 0.080%
 Expense Ratio: 0.000
 Distribution Fee Level: Low
 Share Class Type: No Load

Category: Target-Date 2040
 Investment Style: Large Blend
 Credit Quality / Interest Rate Sensitivity: High/Moderate
 Status: Open
 TTM Yield: 2.07%
 Turnover: 2%

USD | NAV as of Dec 03, 2025 | 1-Day Return as of Dec 03, 2025, 7:56 PM GMT-6

Quote Chart Fund Analysis Performance Sustainability Risk Price **Portfolio** People Parent

Portfolio **Equity** Bond

Asset Allocation

Asset Class	Net	Short	Long	Cat.	Index
U.S. Equity	45.25	0.00	45.25	44.26	50.60
Non-U.S. Equity	29.77	0.00	29.77	21.46	24.51
Fixed Income	22.98	0.02	23.00	13.72	24.20
Other	0.06	0.00	0.06	20.32	0.69
Cash	1.93	4.30	6.23	2.17	0.00
Not Classified	0.00	0.00	0.00	0.07	0.00

Stock Style

Map Weight Historical



Quote Chart Fund Analysis Performance Sustainability Risk **Price** Portfolio People Parent

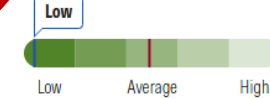
Price

Maximum Sales Fees

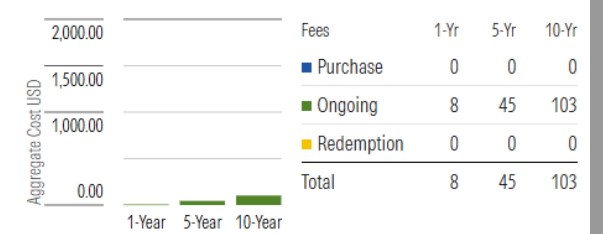
Front Load: —
 Deferred Load: —
 Redemption Load: —
 Min. Initial Investment: 1,000.00

Ongoing Fee Level

Adj. Expense Ratio: 0.080%
 Target Retirement 2036-2040 No Load: 0.535%



Cost Illustration (10k; 5% Return; USD)



Ongoing fees as of Jan 31, 2025. The fees illustrated above do not reflect any additional account-related fees and charges.

Total Holdings

6

% Assets in Top 10 Holdings

99

Reported Turnover %

2.00

As of 09 / 30 / 24

Women Directors %

34

Women Executives %

24

Holdings	Portfolio Weight	Market Value	Cur	Prospectus Net Expense Ratio	1-Year Return	Morningstar Rating	Medalist Rating	Total Assets	Mt
Vanguard Total Stock Mkt Idx Instl Pls	45.36	48,806,072,289	USD	0.02	13.63	★★★★	Gold	2.05 Tri	US
Vanguard Total Intl Stock Index Inv	30.54	32,900,004,973	USD	0.17	25.32	★★★★	Gold	0.55 Tri	US
Vanguard Total Bond Market II Idx Inv	16.75	18,047,26,984	USD	0.09	5.50	★★★★	Bronze	0.35 Tri	US
Vanguard Total Intl Bd II Idx Instl	6.78	7,022,899,910	USD	0.07	2.69	★★★	Silver	0.13 Tri	US
Mktliq 12/31/2049	0.56	600,075,528	—	—	—	—	—	—	—
Us Dollar	0.00	5,144,802	—	—	—	—	—	—	—

Purchasing Mutual Funds

Where?

- Company Retirement Plan
- HSA
- IRA/Roth IRA
- Brokerage Account





Vanguard®



Options



J.P.Morgan

WELLS
FARGO



Large Broker Dealer

- Professional assistance
 - Suitability standard
 - May blend with 'fiduciary' advice
 - High turnover
- More expensive
- Constrained investment product options

Edward Jones | INVESTMENTS



J.P.Morgan



Large Banks

- Professional Assistance
 - Suitability standard
 - May blend with 'fiduciary' advice
- Convenient integration with banking accounts
- Multiple branch locations
- Constrained investment product options



WELLS
FARGO



Low-Cost Brokerage

- Professional assistance available
- Much less expensive
- Index target date options makes this cheap and easy



Q&A

timothy.shirk@francisway.com

